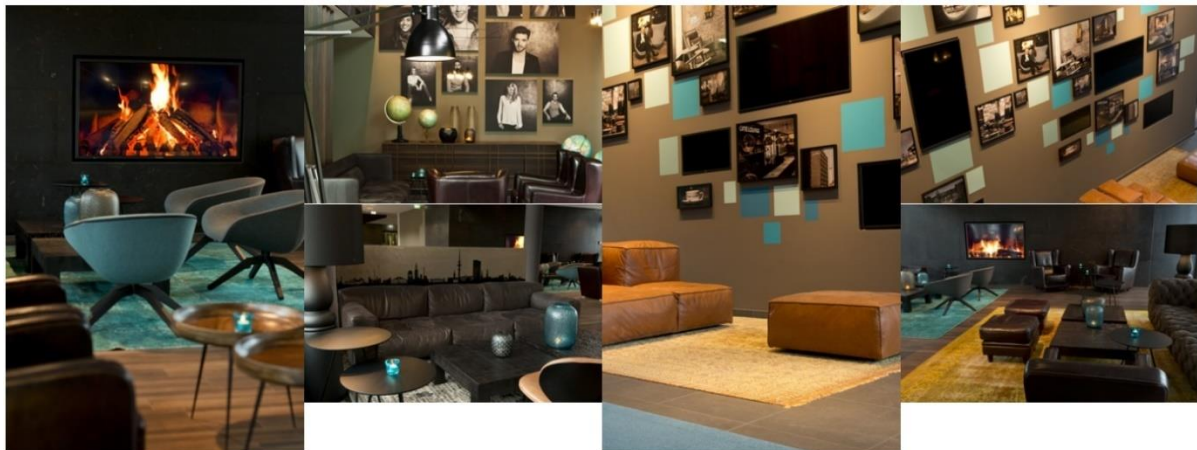


**Motel One München-Campus**

Tegernseer Landstrasse 165, 81539 München

+49 89 6980421-0

[muenchen-campus@motel-one.com](mailto:muenchen-campus@motel-one.com)



Framed by skylines of exclusive destinations and art galleries, the Motel One lounge area offers the perfect framework to relax and get comfortable in their cosy lounge with furnishing by Baxter and B&B Italia.

**FACTS**

- Free Wifi in the entire hotel
- Drinks & snacks – discover our large assortment in the One Lounge
- Pillow and comforter of your choice – including an anti-allergic filling
- Arrival and departure – check-in 3pm / check-out 12pm
- iPad rental – available for free at the front desk
- Parking area
- Healthy breakfast buffet – with a large assortment of organic options and fair-trade coffee
- Subway station ‚Wettersteinplatz‘ within immediate reach of the hotel

### Leonardo Hotel & Residenz München

Heimgartenstraße 14, 81539 München

+49 89 - 620 390

[info.muenchenresidenz@leonardo-hotels.com](mailto:info.muenchenresidenz@leonardo-hotels.com)

#### FACTS

Located in a quiet area yet very close to the city center, the Leonardo Hotel & Residenz Munich is happy to welcome you in east-munich. Conveniently located, the hotel is within immediate reach of the subway station ‚Silberhornstraße‘.

- Check-in: 3pm // check-out: 12pm
- Front desk open 24/7
- Elevator
- Free unlimited wifi access
- Parking garage (15€, no reservations)
- Steam bath (2,50€ per use)
- Finnish sauna (2,50€ per use)
- Fitness area



M U N I C H



### fab Hotel München

**Pfanzeltplatz 11, 81737 München**

**Tel. +49 89 62833950**

**[info@fab-hotel.de](mailto:info@fab-hotel.de)**

**fab-hotel.de**

### FACTS

Thanks to our amazing oak parquet, down-free pillows and blankets, all of our rooms are allergy-friendly. Modern box spring beds ensure a pleasant slumber. After a long and exhausting day, feel free to just relax! In the mornings, our capacious bathroom and shower are perfect for singing! Choose between our business-, comfort or family-rooms.

Further amenities include:

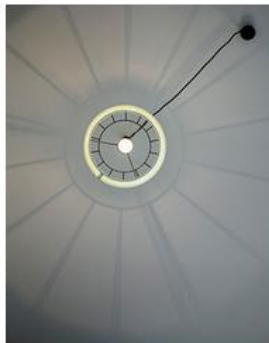
- 40“ flatscreen TV
- Free high speed WiFi
- A bottle of mineral water
- Modern box spring beds
- Writing desk
- Safe
- Balcony on the second and third floor
- Shower, lavatory, personal hygiene products, blow-dryer and cosmetic mirror
- Housemade marmelade and different regionally made high-quality treats at the breakfast buffet

**BOLD Hotel München Giesing**

**Aschauer Str. 12, 81549 München**

**Tel. +49 89 20001592244**

**bold-hotels.com**



**FACTS**

- First opened in 2013
- Front desk open 24/7
- 142 rooms, some with balconies
- 4 room categories
- Free WiFi
- Varying breakfast buffet
- Lounge and bar open 24/7
- Washing machine and dryer
- Patio and roof terrace
- Elevator

**CaviTAU**<sup>®</sup>  
Grünwalder Straße 1  
81547 München  
Telefon: +49 89 244 15 44 60  
Telefax: +49 89 244 15 44 69  
E-Mail: office@cavitaue.de

**Rechtsform:**  
CaviTAU<sup>®</sup> ist ein Geschäftsbereich der  
Digital Dental & Healthcare (DDHT)  
Technology GmbH & Co.KG  
Eintragung:  
Amtsgericht München HRA 11 25 19

**Sitz der Gesellschaft:**  
Grünwald bei München  
Geschäftsführer:  
Dr. Dr. (PhD-UCN) Johann Lechner  
Robert Huber

**Persönlich haftende Gesellschafterin:**  
DDHT Verwaltungs GmbH  
Sitz: Grünwald bei München  
Eintragung:  
Amtsgericht München HRB 25 70 77

- Parking garage

---

**CaviTAU<sup>®</sup>**

Grünwalder Straße 1  
81547 München  
Telefon: +49 89 244 15 44 60  
Telefax: +49 89 244 15 44 69  
E-Mail: office@cavitaude

**Rechtsform:**

CaviTAU<sup>®</sup> ist ein Geschäftsbereich der  
Digital Dental & Healthcare (DDHT)  
Technology GmbH & Co.KG  
Eintragung:  
Amtsgericht München HRA 11 25 19

**Sitz der Gesellschaft:**

Grünwald bei München  
Geschäftsführer:  
Dr. Dr. (PhD-UCN) Johann Lechner  
Robert Huber

**Persönlich haftende Gesellschafterin:**

DDHT Verwaltungs GmbH  
Sitz: Grünwald bei München  
Eintragung:  
Amtsgericht München HRB 25 70 77

**Alter Wirt GmbH**

**Bio-Restaurant und Bio-Hotel**  
**Marktplatz 1, 82031 Grünwald**

**Tel. +49 (0)89 – 64 19 34 0**

**info@alterwirt.de**  
**www.alterwirt.de**



### **FACTS**

Our strictly ecological hotel and its eco-friendly rooms provide stylish wooden furnishing, chestnut floorings, sleaze, natural materials and high-quality beds. Our single or double rooms offer comfort, a modern natural flair, free high-speed WiFi and ensure a pleasant stay.

We are a 3-star superior house and organic-certified. This means that our hotel in all of its doings acts ecologically responsible.

Our spacious and individually furnished rooms vary in size between 17 and 35 square meter. All of our rooms are furnished in a unique, comfortable and modern way.



**CaviTAU®**  
Grünwalder Straße 1  
81547 München  
Telefon: +49 89 244 15 44 60  
Telefax: +49 89 244 15 44 69  
E-Mail: office@cavitau.de

**Rechtsform:**  
CaviTAU® ist ein Geschäftsbereich der  
Digital Dental & Healthcare (DDHT)  
Technology GmbH & Co.KG  
Eintragung:  
Amtsgericht München HRA 11 25 19

**Sitz der Gesellschaft:**  
Grünwald bei München  
Geschäftsführer:  
Dr. Dr. (PhD-UCN) Johann Lechner  
Robert Huber

**Persönlich haftende Gesellschafterin:**  
DDHT Verwaltungs GmbH  
Sitz: Grünwald bei München  
Eintragung:  
Amtsgericht München HRB 25 70 77

**DD Suites**

**Flößergasse 5, 81369 München**  
**Tel. +49 (0)89 – 380330930**

[www.dd-suites.com](http://www.dd-suites.com)  
[info@dd-suites.com](mailto:info@dd-suites.com)



**FACTS**

The DD Suites Aparthotel Munich offers many conveniences to its' guests all whilst still obtaining an authentic bavarian feeling. Our check-in service is opened 24 hours per day and ensures for a comfortable arrival and departure. The washing- and cleaning-service makes sure, all of our rooms and textiles are impeccably clean at all times.

- All suites are non-smoking suites
- 24-hour check-in-machine
- Personal safe in every suite
- Flatscreen TV
- Flat iron & ironing board
- Free high-speed internet-access
- Fully equipped kitchenette
- Parking spots in our parking garage
- Extra towels and bed linen
- Usage of house-own washing-machine and dryer
- Within immediate reach of several stations (bus, subway and S-Bahn)



